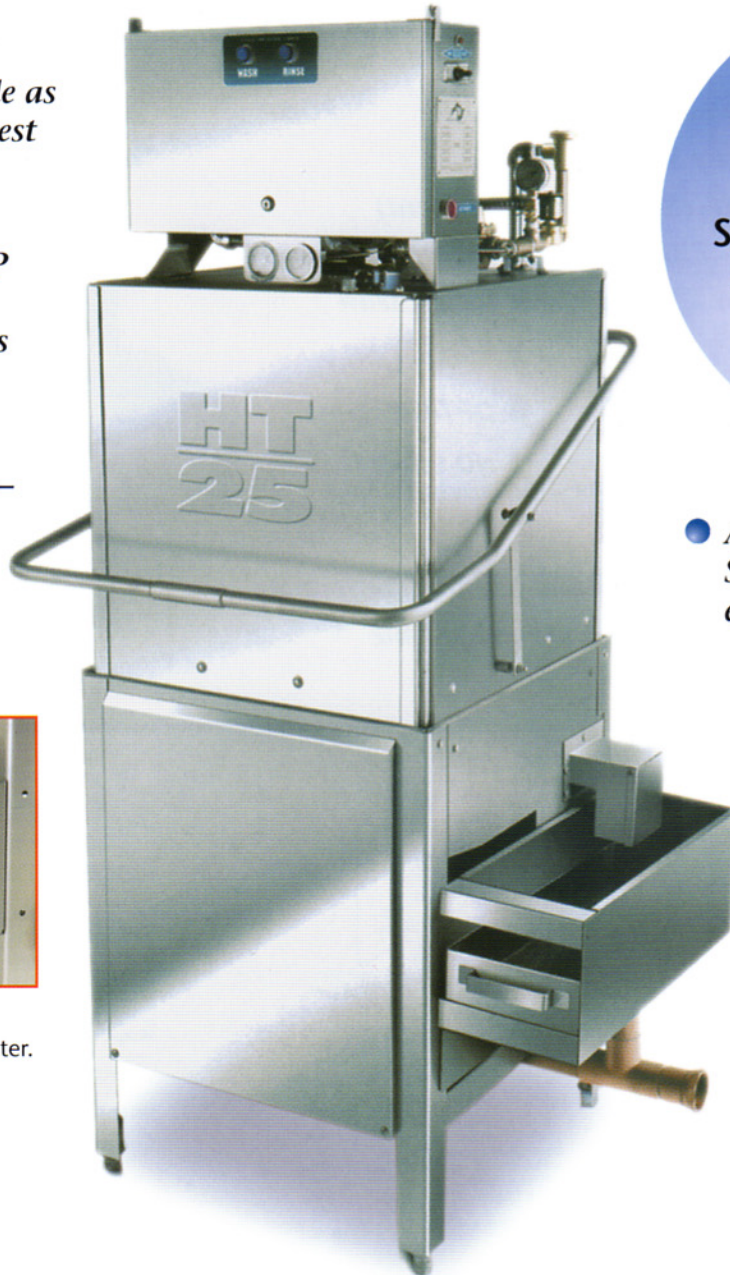


# HT-25 by

## The NEXT GENERATION High-Temp Sanitizer

- Wash, rinse, and sanitize in as little as 45 seconds – Fastest in the industry!
- POWERFUL 3 HP PUMP – Scrubs away what others leave behind!
- Low water usage – only .85 gal. per load!



- Approved Dual Sanitizer – Same machine serves as either High or Low Temp
- Versatile door design – installs corner or straight



(Available with)  
Stainless Steel Built-on Booster.

**Increase your warewashing capacity without expanding your kitchen. Our HT-25 washes 35% FASTER with 33% LESS CHEMICALS, UTILITIES, AND WATER**

*The features of the HT-25 eliminate re-washes. A powerful design with powerful results!*

At American Dish Service, Quality People, Designs, and Products have been the foundations of our organization for over 45 years.

[www.americandish.com](http://www.americandish.com)



**American Dish Service**  
Manufacturers of Ware Washing Equipment

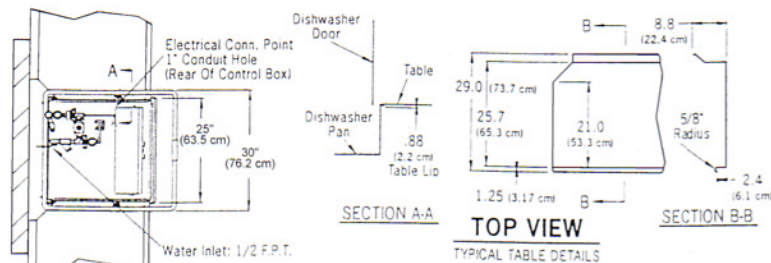
900 Blake Street Edwardsville, KS 66111-3820 **Toll Free (800) 922-2178 Phone (913) 422-3700 Fax (913) 422-6630**

# HT-25

## The NEXT GENERATION High-Temp Sanitizer

This powerful, next generation, high-temp sanitizer provides you with all these features...

- Available with either 45 or 60 second time cycle
- Patented Self Cleaning Spray System
- Auto fill and Auto Shut Off (Standard Equipment)
- Two stage SS Drain Filter – Eliminates clogged pumps
- Built-in Scrap Accumulator – Keeps Wash Tank Clean
- 3 HP Wash Pump
- ADS patented Low-Water Protection
- Durable-life tank heater
- Patented Captive spray arm end caps – no parts to lose
- 18" Door Opening
- Configured for corner or inline – installs without conversion
- No troublesome circuit boards – prevents down time

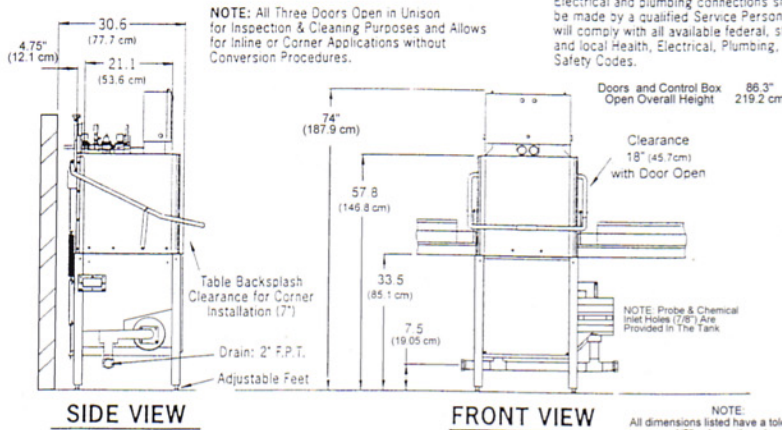


TOP VIEW

\* Manufacturer reserves the right to modify these specifications in compliance with regulatory agencies and manufacturing expediency.

### CAUTION:

Electrical and plumbing connections should be made by a qualified Service Person who will comply with all available federal, state, and local Health, Electrical, Plumbing, and Safety Codes.



SIDE VIEW

FRONT VIEW

NOTE: All dimensions listed have a tolerance of + or - 1/8" unless otherwise noted.



American Dish Service  
Manufacturers of Wire Washing Equipment

www.americandish.com

### MODEL HT-25 SPECIFICATIONS

U.S. REGISTERED PATENTS

Rated Capacity (Racks/Hour)	72 NSF Rated
Wash Tank Capacity	11 Gal. (41.63 Liters)
Water Temperature, Wash	160° F. (71° C.)
Water Temperature, Rinse	180° F. (82.2° C.)
Water Consumption	0.85 Gallons/Rack (3.593 Liters/Rack)
Wash Motor	3 HP
Electrical Requirements	3PH, 208V, 60 Hz, 40 Amp
NOTE: 3PH, requires 8 AWG phase wires, w/10 AWG Neutral Wire, and clean circuits with Ground.	
NOTE: 1PH, 208/240V, 60 Hz, 60/30 Amp	
NOTE: 1PH, 60 Amp requires 6 AWG phase wires, 30 Amp requires 10 AWG phase wires w/10 AWG Neutral Wire, and clean circuits with Ground.	
NOTE: Call Factory for Requirements for Booster Heater.	
Wash Heater	8KW
Rack Size	19-3/4" x 19-3/4" (50.2 cm x 50.2 cm)
Door Clearance	18" (45.72 cm)
Water Inlet (1)	1/2" F.P.T.
Drain	2" F.P.T.
Height (All Doors Closed)	74" (187.96 cm)
Width, Table to Table (Inline Model)	25" (63.5 cm)
Width w/ Scrap Accumulator (Overall)	37" (93.9 cm)
Depth (Overall)	33.5" (85.0 cm)
Shipping Weight	485 lbs. (219.9 kg.)
Shipping Volume	81.51 cu. feet

© 9/02 American Dish Service

ADS has built a strong history based on Customer Service, Quality and Reliability. A Commitment to Excellence is the driving force behind American Dish Service.

900 Blake Street Edwardsville, KS 66111-3820 Toll Free (800) 922-2178 Phone (913) 422-3700 Fax (913) 422-6630