

"3D-5" Series by

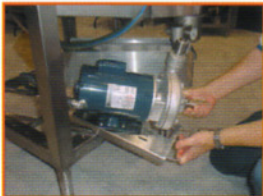
The SERVICEABLE Machine

**Greater
Door
Clearance**
Wash Taller Wares

(Air Gap fill)
Eliminates the need for check valves and vacuum breakers

(Dual Screens)
Protect intake of pump.

(Quick Service Pump)
Pump slides forward providing for easier repair.



(Swift Plumbing Removal)
All plumbing is connected using zero-interference Stainless/Terelene Couplers.



AFC-3D-S
Corner outside sump with built-in scrap accumulator

(20.5" Door Clearance)
Perfect for pizza applications.

(Diagonal Scrap Trap)
Provides easy screen removal in both corner and pass-through models

Save time and money by reducing labor.

You can now machine wash that which was once washed by hand.

At American Dish Service, Quality People, Designs, and Products have been the foundation of our organization for over **45 years**.

www.americandish.com



American Dish Service
Manufacturers of Ware Washing Equipment

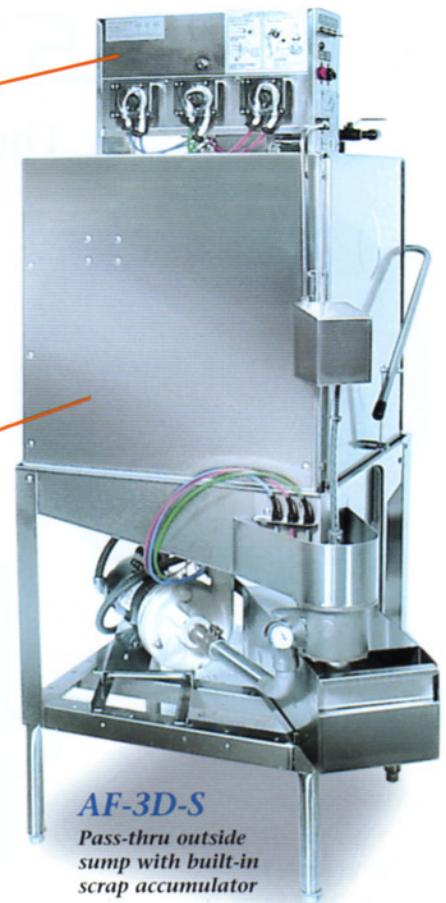
900 Blake Street Edwardsville, KS 66111-3820 **Toll Free (800) 922-2178** **Phone (913) 422-3700** **Fax (913) 422-6630**

"3D-5" Series

(Additional Options)
Also available with solid chemical dispensing

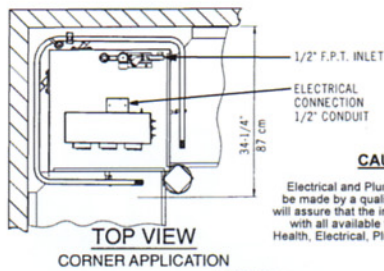


(Stainless Steel Spray Bases, Bayonets, and Manifold Couplings)
Allows for quick release spray arm removal for ease of cleaning

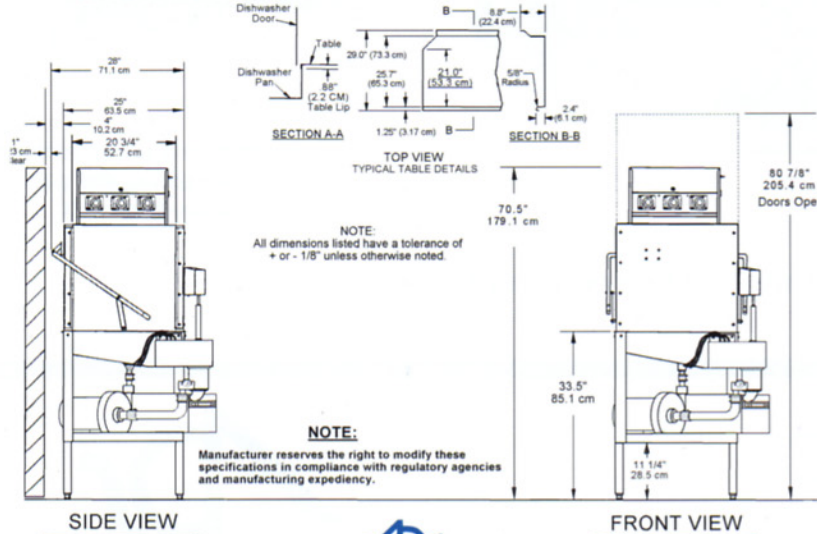
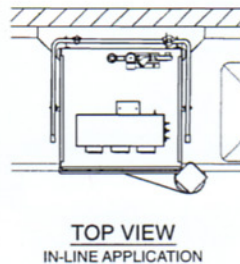


AF-3D-S
Pass-thru outside sump with built-in scrap accumulator

- Convertible Design
- Great door clearance 20.5"
- Quick Service 1 1/2 HP pump
- Quick release spray arms
- Stainless steel air gap
- Run indicator light
- Simple to clean
- Available with solid chemical dispensing



CAUTION:
Electrical and Plumbing connections must be made by a qualified Service Person who will assure that the installation is in compliance with all available federal, state, and local Health, Electrical, Plumbing, and Safety codes.



NOTE:
All dimensions listed have a tolerance of + or - 1/8\"/>

NOTE:
Manufacturer reserves the right to modify these specifications in compliance with regulatory agencies and manufacturing expediency.

ADS
American Dish Service
Manufacturers of Ware Washing Equipment
www.americandish.com

3D-S Series SPECIFICATIONS

FAMILY MODELS	
AF-3DS	AH-3DS
AFC-3DS	AHC-3DS
RATED CAPACITY (Racks/Hr.)	37 23
WASH TIME (Sec.)	45 75
RINSE TIME (Sec.)	30 60
DWELL (Sec.)	15 15
TOTAL CYCLE TIME (Sec.)	90 150
WATER TEMPERATURE (Supply)	120 °F Min. 49 °C Min.
WATER CONSUMPTION	2.2 Gal's Per Cycle 8.3 Liters Per Cycle
MOTOR	1.5 HP 1.125 KW
ELECTRICAL RATINGS	115 Volts Single Phase
Connect to Supply Source using 10-12 AWG copper wires. Circuit Protection: 20 AMP Circuit Breaker or Fuse with a 20 AMP Rating.	
RACK SIZE	19 3/4" x 19 3/4" 50.2 cm x 50.2 cm
DOOR CLEARANCE	20 3/4" x 20 1/2" 52.7 cm x 52.1 cm
WATER INLET	1/2" F.P.T.
DRAIN (Scrap Trap)	2" Pipe
HEIGHT (Door Open)	80 7/8" 205.4 cm
HEIGHT (Door Closed)	70 1/2" 179.1 cm
WIDTH (Overall)	33 1/2" 85.1 cm
WIDTH (Table to Table)	25" 63.5 cm
DEPTH (Overall)	34 1/4" 86.9 cm
SHIPPING WEIGHT	295 lb. 133.8 kg.
SHIPPING VOLUME	56.25 cu. ft. 1.59 cu meters

Effective: 10/02



ADS has built a strong history based on Customer Service, Quality and Reliability. A Commitment to Excellence is the driving force behind American Dish Service.

900 Blake Street Edwardsville, KS 66111-3820 Toll Free (800) 922-2178 Phone (913) 422-3700 Fax (913) 422-6630

© 10/02